

Richmond Park, Richmond, United Kingdom. Photo by [Marek Mucha](#)

Here are our updates for December. Our release webinar for Q4 2021 will be held Dec 9th, 2021 1:00 PM - 2:00 PM CET, [sign up here!](#)

We hope you have a great exam season and safe and happy December!

The Inspera Team

Heads up

Downtime with January release

Within the maintenance window in January we are making some changes to the infrastructure of Inspera Assessment that requires service wide downtime. We will keep the [status page](#) updated with more information as we get closer to the maintenance window, as well as during the maintenance. Please avoid use of Inspera Jan 7th, 2022, 22:00 CET - Jan 8th, 2022, 00:00 CET (2 hours).

Early access to release notes from January:

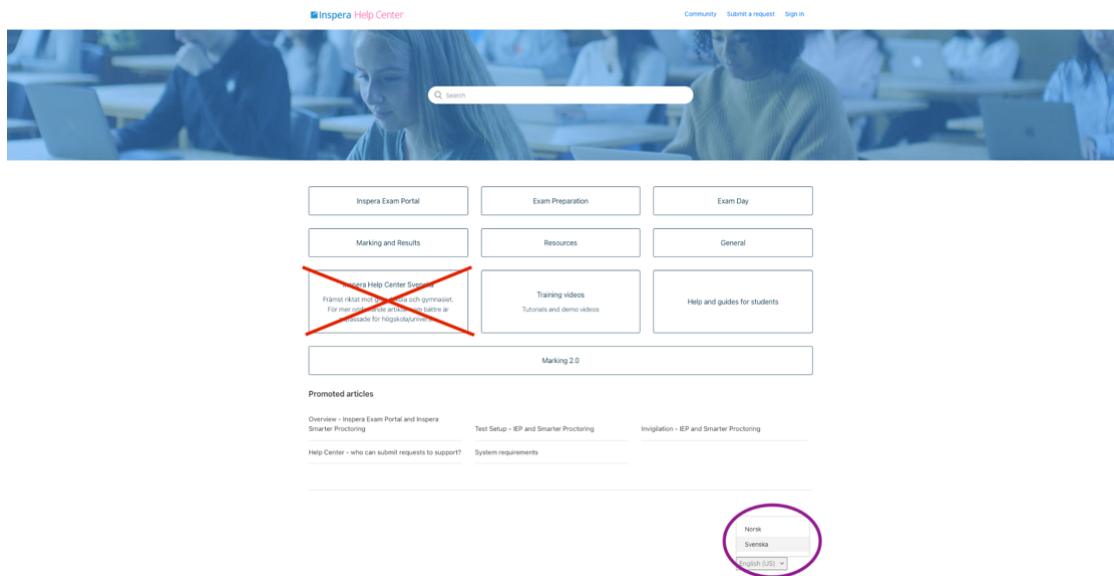
Many of our users want us to share what is coming the next release(s) in more detail ahead of time. Starting with the January release, we will share release notes ahead of the release, typically 10-12 days ahead of the release. The new page with release notes will be updated frequently running up to the release.

For Nordic customers: Discontinued print service for Inspera Scan sheets

Inspera has been offering a print service, but due to limited usage, we advise that direct contact with print vendors is done to any future Inspera Scan print needs.

Changes to the Swedish Help Center

We are making changes to the [Swedish Help Center](#) that will be reflected towards the end of December. The Swedish category located in the English home page of the Help Center will be removed. Swedish articles will remain and can be found by selecting the Swedish language option, located at the bottom of the Help Center page.



Coming in January

Candidate Report Improvements

Final result, candidate submission, and explanation of grades will be included in the Candidate report, bringing it up to feature parity with the current candidate dashboard. You will be able to fully rely on the Candidate report to distribute the results to candidates.

Update to Inspera Exam Portal (IEP)

To avoid making major changes during exam season, we are upgrading all existing customers to Inspera Exam Portal version 1.13.x by January 7th and not December as planned. You will receive the new version through your customer contact.

Note: Versions below 1.13 will not be supported past January 7th. If a candidate tries to login with an older version, they will receive a message asking them to update.

For more information on what changes have been made to each version of IEP, visit our Help Center. [Learn more](#)

More is also planned, but not yet confirmed, watch out for new email on next release before Christmas!

Inspira Roadmap 2022:

Here, you can find useful information such as features that are being planned, in progress, and in beta by visiting the [Inspira Roadmap](#)

New features in this release

Inspira Chat

Inspira chat is now available for all customers in beta, meaning the service can be used, but with known limitations. With this release, we have solved several issues related to third party cookies affecting chat usage with some browsers and ad-blockers. [Learn more.](#)

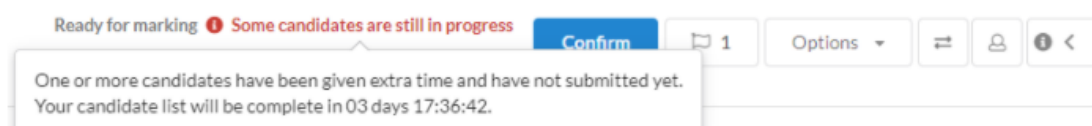
Known limitations:

- Only available in English for now
- Chat available in separate module for Chat Manager, in the future it will be part of Monitor

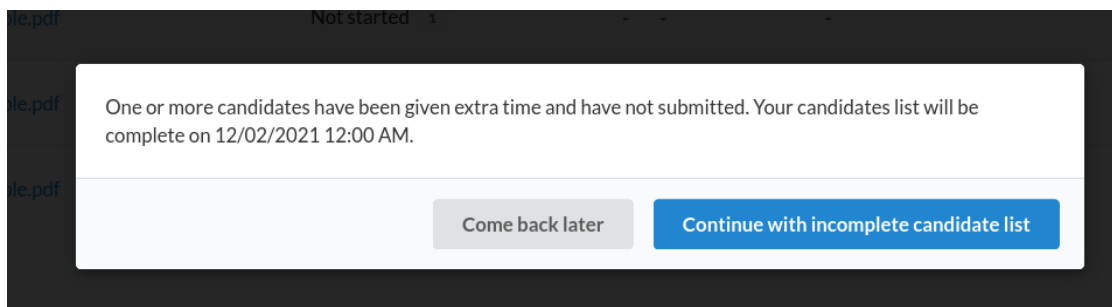
Please note that Inspira Chat will come at an additional cost once out of beta and has to be enabled by service desk.

Improved information in Marking related to Individual End Time

If there are unsubmitted candidates in a test, or if some candidates are still able to submit multiple times within the individual end time window, a warning is displayed in the header when Graders try to share/confirm their answers.



If a Grader tries to Confirm/Share grades before a candidate has submitted their test, they are prompted with a message informing them that they can come back later, or continue with the incomplete candidate list. [Learn more](#)



Optional design settings within the test player

After feedback from users, we have now made it possible to hide the three new design settings that we released last month:

- Show progress indicator
- Warning when navigating away from pages with incomplete response
- Highlight “next” button when responses are completed

Please reach out to our Service Desk if you would like to remove these for your entire marketplace.

Other improvements and bug fixes

Authoring

- Audio and images as alternatives in MCQ/MR questions: added support for replacing uploaded audio/images with deleting the entire alternative.
- *Coming next Friday (Dec 10th)*: Possibility to upload more question types using Excel. In addition to the [already supported question types](#), we are adding support for Text Entry, Numerical Entry, Document and True/False.

Accessibility

- The issue with question weight and assignment not being seen in the Question workspace has been resolved

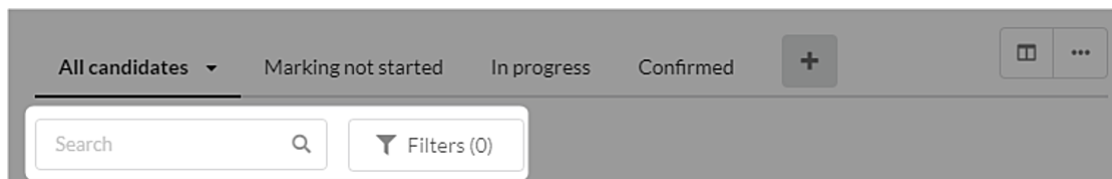
Adding template to test

- *Coming next Friday (Dec 10th)*: Customers may enable the option to add template to test. You can already create a test from template, now we are also enabling the option to apply a template after a test has been created. This enables customers who for instance only add tests (without templates) through APIs to also be able to use templates. One good use case is to quickly add standard test settings for your organisation. Please contact the

service desk to enable after December 10th. Documentation will also be shared next week [here](#).

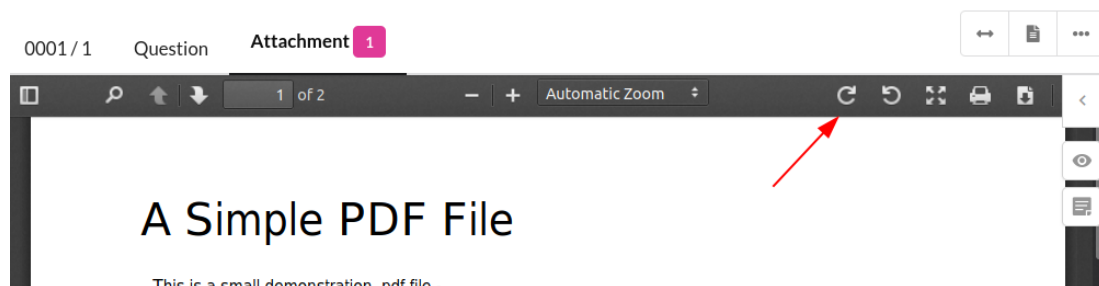
Marking

- Added default filter “Answer questions” which is available in the question list and footer components
- Search and Filter functionality is now fixed onto the page and does not require a hovering action to become displayed. [Learn more](#)



The issue with question weight and assignment not being seen in the Question workspace has been resolved.

- The selected workspace now has a more visible contrast color.
- Users will receive a warning when they try to add a quick mark that's too long.
- PDF rotation is now supported in the PDF viewer in Marking 2.0



Integrations

Improvements to LTI

- Result passback:
 - Added support for customer specific number of decimals when rounding the results. Default number of decimals is two, but for some LMS (Blackboard) this number has to be flexible per customer setup.
- Membership service in Canvas:

- Added support for multi paged membership service in Canvas, where users are sent through membership service in groups of 10 persons per page.

Improvements to TurnItIn integration

- Added support for similarity check for group exams

Ladok integration

- Test duration field is now opened for editing for tests imported from Ladok

General improvements

- allResults API now return grading scale sorted in the same order as UI
- Improvements for SSO using LIN values for extracting user information

Inspira AS, Cort Adelers gate 30, Oslo, Norway 0254, +4723245100

[Unsubscribe](#) [Manage preferences](#)