



inspera

Inspera Originality.

Pioneering Originality in the World of AI.



Introduction

What is Inspera Originality?

Inspira Originality is an originality software solution designed to uphold academic integrity through advanced similarity checking, translation matching, and AI authorship analysis, with a vision to expand into comprehensive document analysis including writing quality, style, text manipulations, and reference evaluation.

Product Capabilities



Originality

- Multilingual
- Translations
- AI Authorship



Access to content

- Proprietary
- Institutional
- Open Access
- Premium (soon)



Integrations

- Stand-alone application
- APIs
- Direct LMS (soon)



Analytics

- Role-based insights and statistics

Benefits of Inspera Originality



Holistic approach to ensuring originality

Advanced similarity checking with multi-lingual and translation capabilities and AI authorship verification.



Unmatched similarity insights

Classification of similarity findings as exact matches (80%-100%), possibly altered text (60%-80%), and in-text citations.



You own your data

Institutions have full access and control over their data and can enable students to remove their assignments at any time.



Interactive Reports - Online & Offline

Highly interactive and user friendly originality reports enabling a transparent experience, available in offline format too.

Originality Score



Multilingual Similarity Checking

Inspira Originality enables checking writings in more than **30 languages**.



Cross-lingual Similarity Checking

Inspira Originality enables identifying translation similarities for more than **100 language pairs**.



AI-text Detection:

Inspira Originality enables identifying AI written text from major **LLMs and paraphrasing tools**.

Similarity Checking

Our similarity checking solution compares each sentence as units for comparison rather than “bag-of-words”, allowing for a more semantic searching and in-depth similarity comparison.



Exact match

Sentence similarity classification that indicates a sentence similarity score of 80%-100%.



Possibly altered text

Sentence similarity classification that indicates a sentence similarity score between 60%-80%.



Citations

Sentence similarity classification that indicates the text was found similar and proper citation was identified.

Exact Match - Highlight

Demo Essay
AI effects in Education
(English + Spanish + GPT1-4)

Artificial intelligence AI has the potential to transform how our education system operates, heighten the competitiveness of institutions, and empower teachers and learners of all abilities. The opportunities for AI to support education are so broad that recently Microsoft commissioned research on this topic from IDC to understand where the company can help.

The findings illustrate the strategic nature of AI in education and highlight the need for technologies and skills to make the promise of AI a reality. The results showed almost universal acceptance among educators that AI is important for their future—99.4% said AI would be instrumental to their institution's competitiveness within the next three years, with 15% calling it a "game-changer." Nearly all are trying to work with it too—92% said they have started to experiment with the technology (Ayoub, 2020). Yet on the other hand, most institutions still lack a formal data strategy or practical measures in place to advance AI capabilities, which remains a key inhibitor.

The finding indicates that although the vast majority of leaders understand the need for an AI strategy, they may lack clarity on how to implement one. And it could be that they just don't know where to start.

David Kellermann has become a pioneer in how to use AI in the classroom. At the University of New South Wales in Sydney, Australia, Kellermann has built a question bot capable of answering questions on its own or delivering video of past lectures.

The bot can also flag student questions for teaching assistants (TAs) to follow up.

What's more, it keeps getting better at its job as it's exposed to more and different questions over time.

Exact match

- An "Exact Match" indicates a high degree of similarity between two sentences, approaching or achieving near-identical content.
- This classification takes into account sentences that fall within the range of 80% to 100% similarity score.
- In this category, sentences are considered almost identical, with minor differences such as synonyms or minor rephrasing.

Use Case:

- Identifying instances of verbatim copying in texts.
- Detecting precise duplication in assignments or writings.

Possible Altered Text - Highlight

Demo Essay AI effects in Education (English + Spanish + GPT1-4)

Artificial intelligence (AI) is a major influence on the state of education today, and the implications are huge. AI has the potential to transform how our education system operates, heighten the competitiveness of institutions, and empower teachers and learners of all abilities. The opportunities for AI to support education are so broad that recently Microsoft commissioned research on this topic from IDC to understand where the company can help.

The findings illustrate the strategic nature of AI in education and highlight the need for technologies and skills to make the promise of AI a reality. The results showed almost universal acceptance among educators that AI is important for their future—99.4% said AI would be instrumental to their institution's competitiveness within the next three years, with 15% calling it a "game-changer." Nearly all are trying to work

1 Yet on the other hand, most institutions still lack a formal data strategy or practical measures in place to advance AI capabilities, which remains a key inhibitor.

2 The finding indicates that although the vast majority of leaders understand the need for an AI strategy, they may lack clarity on how to implement one. And it could be that they just don't know where to start.

3 David Kellermann has become a pioneer in how to use AI in the classroom. At the University of New South Wales in Sydney, Australia, Kellermann has built a question bot capable of answering questions on its own or delivering video of past lectures.

The bot can also flag student questions for teaching assistants (TAs) to follow up.

4 What's more, it keeps getting better at its job as it's exposed to more and different questions over time.

● Possibly Altered Text

- "Possibly Altered Text" denotes a moderate level of similarity between two sentences, but with observable differences or alterations.
- This classification takes into account sentences that fall within the range of 60% to 80% similarity score, indicating that the sentences share similar words but are not copied verbatim.
- This category is relevant for identifying sentences that may have been paraphrased, reworded, or undergone substantive modifications and have not been properly cited.

Use Case:

- Uncovering instances of text that have been rephrased while retaining key concepts.
- Bad paraphrasing instances.

Citation - Highlight

Demo Essay
AI effects in Education
(English + Spanish + GPT1-4)

Artificial intelligence (AI) is a major influence on the state of education today, and the implications are huge. AI has the potential to transform how our education system operates, heighten the competitiveness of institutions, and empower teachers and learners of all abilities. The opportunities for AI to support education are so broad that recently Microsoft commissioned research on this topic from IDC to understand where the company can help.

The findings illustrate the strategic nature of AI in education. The results showed almost universal acceptance among educators that AI is important for their future—99.4% said AI would be instrumental to their institution's competitiveness within the next three years, with 15% calling it a "game-changer." Nearly all are trying to work with it—92% said they have started to experiment with the technology (Ayoub 2020). practical measures in place to advance AI capabilities, which remains a key inhibitor.

The finding indicates that although the vast majority of leaders understand the need for an AI strategy, they may lack clarity on how to implement one. And it could be that they just don't know where to start.

David Kellermann has become a pioneer in how to use AI in the classroom. At the University of New South Wales in Sydney, Australia, Kellermann has built a question bot capable of answering questions on its own or delivering video of past lectures. The bot can also flag student questions for teaching assistants (TAs) to follow up.

What's more, it keeps getting better at its job as it's exposed to more and different questions over time.

● In-text citations

- "In-text citations" in our similarity checking solution indicate that text closely resembles or matches existing sources, and proper citations have been identified.
- This category implies there has been found similarity but there is also proper attribution and source attribution.
- Citations play a critical role in maintaining academic and professional integrity by crediting original authors and sources.

Use Case:

- Supporting evaluators identify proper cited text.
- Ensuring that content with similarities to existing sources is appropriately attributed.

AI-text detection

AI-text detection technology works by analyzing both the whole document and sentences for anomalies or patterns found in AI written text.



AI-text Probability (document level):

The whole writing receives a probability score for being AI written.



Word Prediction Probability Score (sentence classification):

For each sentence we analyze the probability of predicting word choices based on trained AI/Human text.

Sentence-based AI Detection

Demo Essay AI effects in Education (English + Spanish + GPT1-4)

Artificial intelligence (AI) is a major influence on the state of education today, and the implications are huge. AI has the potential to transform how our education system operates, heighten the competitiveness of institutions, and empower teachers and learners of all abilities. The opportunities for AI to support education are so broad that recently Microsoft commissioned research on this topic from IDC to understand where the market was heading.

The findings illustrate the strategic nature of AI in education and highlight the need for technologies and skills to make the promise of AI a reality. The results showed almost universal acceptance among educators that AI is important for their future—99.4% said AI would be instrumental to their institution's competitiveness within the next three years, with 15% calling it a "game-changer." Nearly all are trying to work with it, too—92% said they have started to experiment with the technology (Ayoub 2020). Yet on the other hand, most institutions still lack a formal data strategy or practical measures in place to advance AI capabilities, which remains a key inhibitor.

The finding indicates that although the vast majority of leaders understand the need for an AI strategy, they may lack clarity on how to implement one. And it could be that they just don't know where to start.

David Kellermann has become a pioneer in how to use AI in the classroom. At the University of New South Wales in Sydney, Australia, Kellermann has built a question bot capable of answering questions on its own or delivering video of past lectures. The bot can also flag student questions for teaching assistants (TAs) to follow up. What's more, it keeps getting better at its job as it's exposed to more and different questions over time.

AI-Text Detection

- In the AI-text detection, we currently use a binary approach where we highlight the sentences based on the evaluation of our model; AI written or human written.
- If a sentence is found similar in either document language or translation are not reported in the AI Authorship report even if classified as AI written text.
- At this point, we do not provide argumentation regarding the why and how we classified a sentence as AI written text, you can expect in the near future to have more insights on each sentence.

Use Case:

- Identifying sentences that are potentially written by an AI tool.
- Identifying sentences written with AI but poorly paraphrased.

Inspera Originality Report

Similarity Report

- Document language
- Translation

AI Authorship Report

- AI-written sentences



Originality Checking Performance

2nd Best
Tool in the
market

[Read the report](#)

Language	CopyPass	Symyx	Paraphrase	Translation	OriginalityCheck	CopyPass	Symyx	Paraphrase	Translation	OriginalityCheck	CopyPass	Symyx	Paraphrase	Translation	OriginalityCheck
Czech	2.0	1.5	1.0	0.8	0.3	1.6	1.5	1.0	0.8	0.3	1.6	1.5	1.0	0.8	0.3
German	2.0	1.6	2.1	0.8	0.3	1.3	0.3	2.5	1.5	0.6	2.6	2.6	0.5	2.1	2.4
English	2.0	2.3	2.8	0.8	0.4	1.3	3.1	2.1	1.2	4.0	3.0	3.7	3.2	3.3	3.2
Spanish	2.4	2.1	2.4	0.8	0.4	2.7	2.0	2.7	2.0	2.9	2.9	2.9	2.6	2.4	2.1
Italian	2.4	2.1	2.1	0.8	0.4	3.0	2.0	1.9	1.9	3.0	3.0	2.6	2.6	2.4	2.8
Lithuanian	2.8	2.8	1.8	0.8	0.4	2.3	2.8	1.6	2.7	2.4	1.2	2.3	2.2	2.3	2.3
Slovak	1.1	2.0	1.7	0.8	0.4	1.0	2.1	2.0	1.5	1.3	1.8	1.7	1.7	2.4	1.3
Turkish	2.0	1.5	1.5	0.8	0.4	1.0	1.7	1.1	1.9	1.8	2.0	1.4	2.4	1.2	1.2

63%
Human-Based
Translation
accuracy

[Read the case study](#)

Name of Document	Date	Number of Words	HL-Flag	Originality	Similarity Report	Details
Annual Report of Leonardo...	2019-03-01	428	HL 100.0%	HL 100.0%	View	Details
Annual Report of Service...	2019-03-01	495	HL 91.6%	HL 45.6%	View	Details
Annual Report of GSK in...	2019-03-01	498	HL 92.2%	HL 58.9%	View	Details
Annual Report of Bank of...	2019-03-01	372	HL 77.6%	HL 36.7%	View	Details
Annual Report of Bank of...	2019-03-01	508	HL 93.3%	HL 43.9%	View	Details
Annual Report of Bank of...	2019-03-01	498	HL 98.4%	HL 57.6%	View	Details
Annual Report of National...	2019-03-01	498	HL 96.8%	HL 67.2%	View	Details
Annual Report of Taylor C...	2019-03-01	395	HL 95.3%	HL 54.7%	View	Details
Annual Report of The Bank...	2019-03-01	389	HL 99.6%	HL 61.8%	View	Details
Annual Report of Deutsche...	2019-03-01	448	HL 99.3%	HL 67.0%	View	Details

84%
Software-Based
Translation
accuracy

[Read the case study](#)

Name of Document	Date	Number of Words	HL-Flag	Originality	Similarity Report	Details
CopyPass - The Ultimate...	2019-03-01	474	HL 100.0%	HL 96.2%	View	Details
CopyPass - The Ultimate...	2019-03-01	330	HL 100.0%	HL 98.2%	View	Details
CopyPass - The Ultimate...	2019-03-01	331	HL 100.0%	HL 98.2%	View	Details
CopyPass - The Ultimate...	2019-03-01	334	HL 100.0%	HL 98.2%	View	Details
CopyPass - The Ultimate...	2019-03-01	337	HL 100.0%	HL 98.2%	View	Details
CopyPass - The Ultimate...	2019-03-01	338	HL 100.0%	HL 98.2%	View	Details
CopyPass - The Ultimate...	2019-03-01	339	HL 100.0%	HL 98.2%	View	Details
CopyPass - The Ultimate...	2019-03-01	340	HL 100.0%	HL 98.2%	View	Details
CopyPass - The Ultimate...	2019-03-01	341	HL 100.0%	HL 98.2%	View	Details
CopyPass - The Ultimate...	2019-03-01	342	HL 100.0%	HL 98.2%	View	Details
CopyPass - The Ultimate...	2019-03-01	343	HL 100.0%	HL 98.2%	View	Details
CopyPass - The Ultimate...	2019-03-01	344	HL 100.0%	HL 98.2%	View	Details
CopyPass - The Ultimate...	2019-03-01	345	HL 100.0%	HL 98.2%	View	Details
CopyPass - The Ultimate...	2019-03-01	346	HL 100.0%	HL 98.2%	View	Details
CopyPass - The Ultimate...	2019-03-01	347	HL 100.0%	HL 98.2%	View	Details
CopyPass - The Ultimate...	2019-03-01	348	HL 100.0%	HL 98.2%	View	Details
CopyPass - The Ultimate...	2019-03-01	349	HL 100.0%	HL 98.2%	View	Details
CopyPass - The Ultimate...	2019-03-01	350	HL 100.0%	HL 98.2%	View	Details

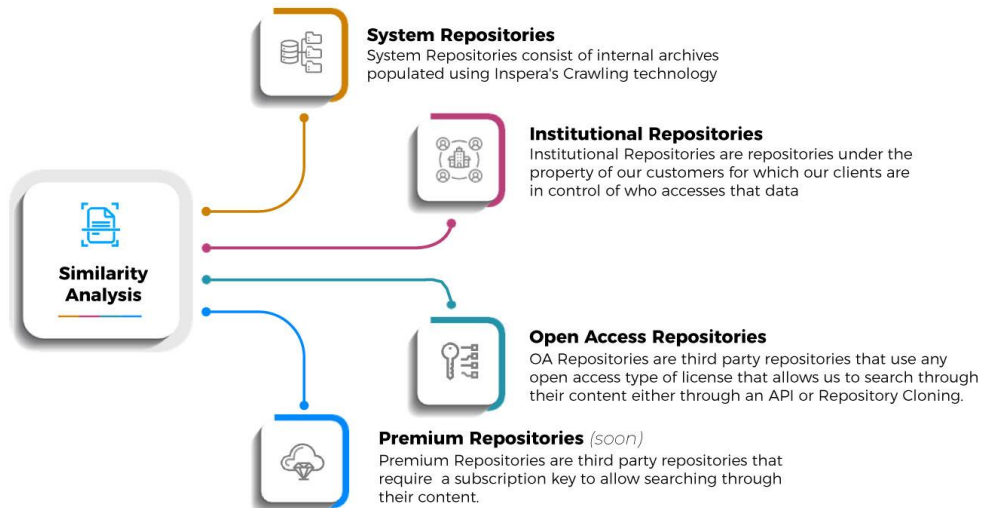
96.05%
AI-text
detection
accuracy

[Read our report](#)

Scenario	Articles	Accuracy	False Rate
Human text	50	96.94%	1.06%
ChatGPT text	50	100%	0.00%
ChatGPT Quillbot paraphrased text	50	92.11%	7.89%
GPT-4 text	50	98.53%	1.47%
GPT-4 Quillbot paraphrased text	50	90.65%	9.35%

Access to content

Access to content for Similarity Checking



Content Administration Features



Control Panel *(soon)*

- Migrate institutional data
- Restrict Content Access
- Manage Content Access Requests



Default Searching

- Inspera's Repositories
- Client Repositories
- Open Access Repositories

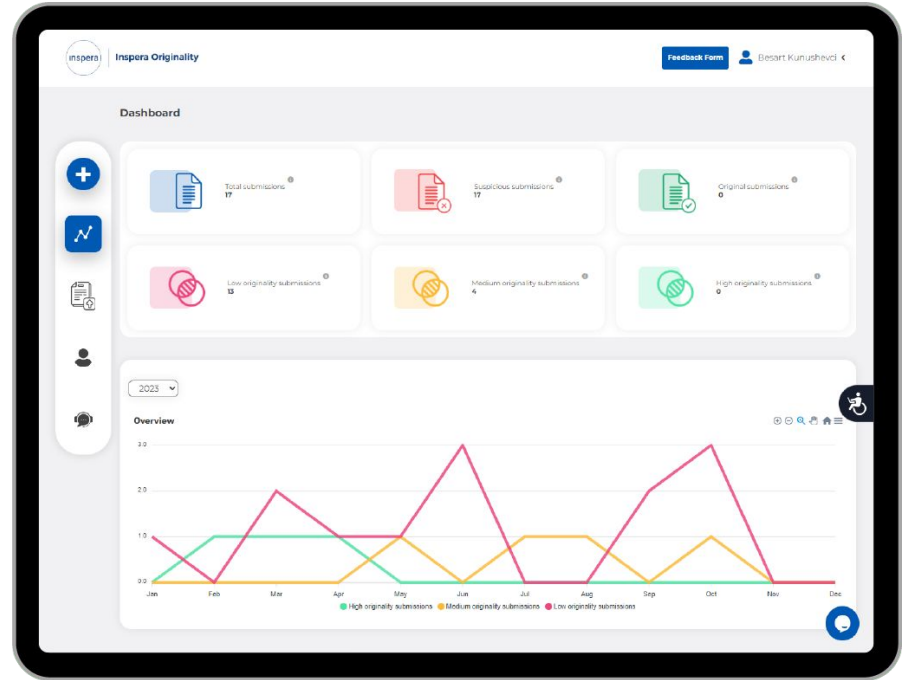


Content Marketplace *(soon)*

- BYOL Key Validator
- Repository Marketplace

Analytics

Role-based originality and integrity **insights** and **analytics**.



Integrations



API

Document-level API (file-based)
& Sentence-level API
(text-based)



LMS (soon - post pilot)

LTI 1.3 Compliant & Direct LMS
Integration (Canvas, Moodle,
BlackBoard, and D2L)

The logo consists of a white circle containing the word "inspera" in a lowercase, white, sans-serif font. The background of the slide is a dark blue gradient with a white dotted pattern on the left side.

inspera

Inspera Originality Pilot

October 2023

What can customers expect from the pilot?



Upload documents for originality checking

Upload documents individually or in bulk.



Originality report for each document

Data insights and originality information for each document.



Dedicated account for testing

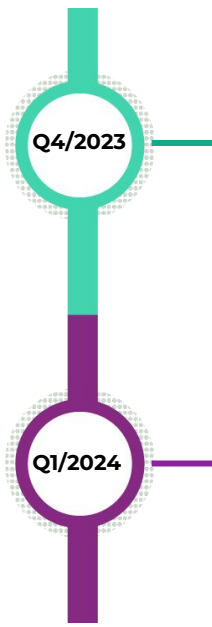
A dashboard that will allow you to engage with all the uploaded document in one place



Feedback for improvement

We will be reaching out systematically to ask for your feedback and experience.

Originality Solution Roadmap



Q4/2023

Inspira Assessment upgrade with Originality:

Existing Inspira Assessment users can upgrade their workflows to include originality checking for essays and file upload questions.

Q1/2024

Direct LMS and LTI 1.3 Integrations:

Inspira Originality can be subscribed as a separate product from Inspira Assessment and will be available across 4 major LMSs directly and across more than 80 other LMSs through LTI 1.3 integration.

Thank you!

The logo for Inspera, consisting of the word "inspera" in a white, lowercase, sans-serif font, centered within a white circular outline. The background of the slide is dark blue with a white dotted pattern on the left side.

inspera



Besart Kunushevci

Head of Originality and Integrity Solutions

 www.inspera.com

 besart.kunushevci@inspera.com

 [@Inspera](https://twitter.com/Inspera)